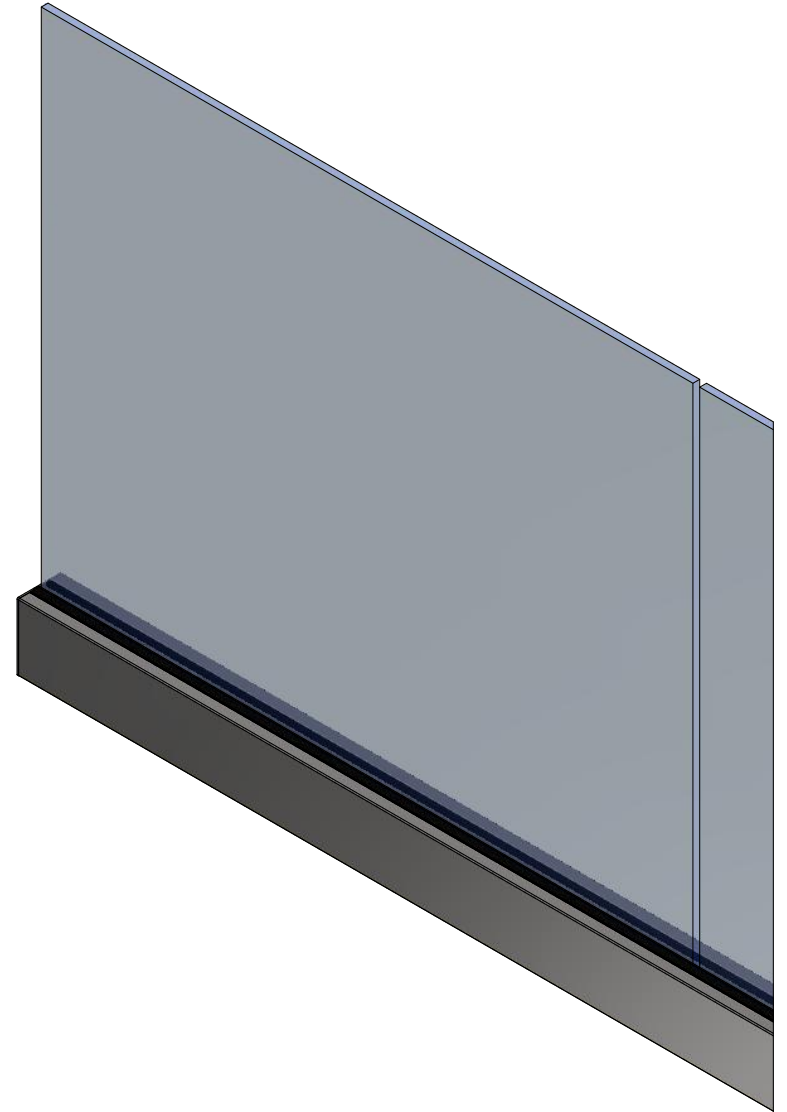
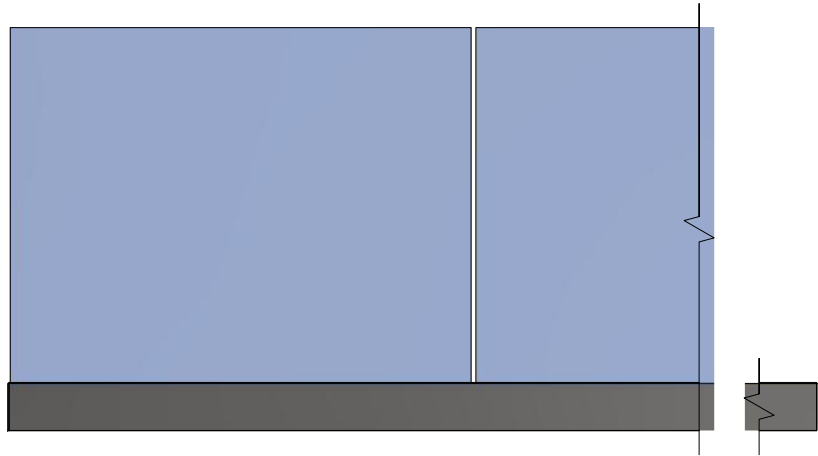


2

1

B

B



A

A



SYSTEM / PRODUCT:
GLASS - BASE RAIL SHOE SYSTEM



DRAWN BY:
JJJ

DATE:
12/13/2018

SIZE:
A

SCALE:
1/10

REV:

SHEET NAME: OVERVIEW

2

1

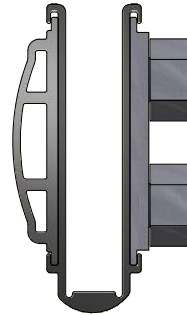
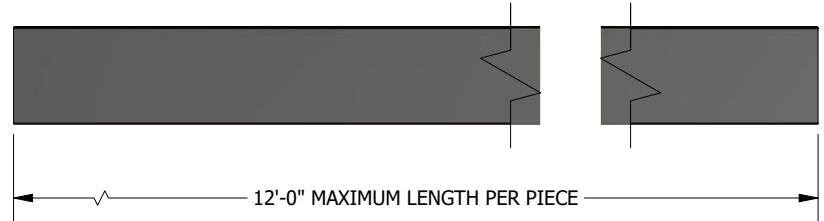


2

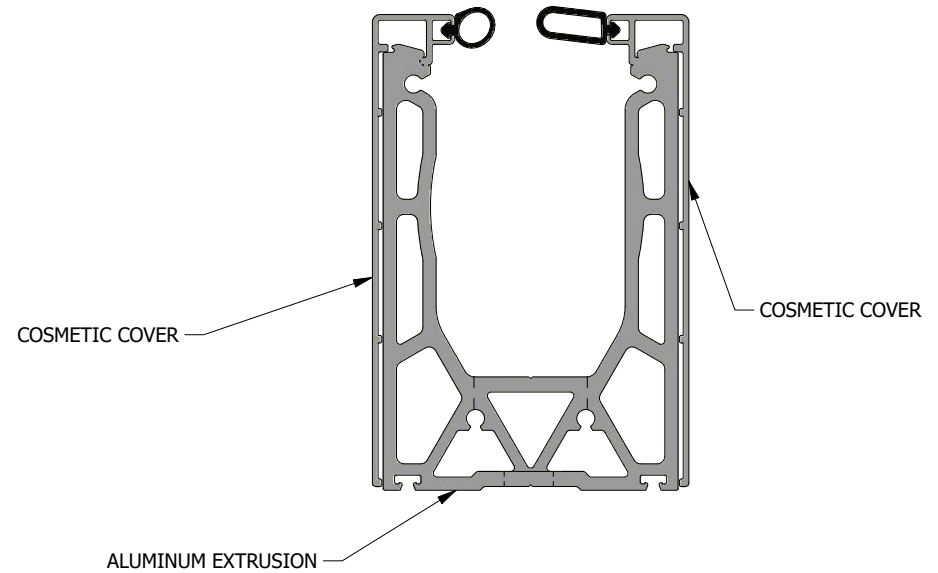
1

B

B



TILT LOCK
SUPPLIED AS ASSEMBLED UNIT



BASE RAIL
EXTRUDED ALUMINUM
SUPPLIED AS 1 UNIT
SOLD IN 6" INCREMENTS FROM 3' TO 12'

A

A



SYSTEM / PRODUCT:
GLASS - BASE RAIL SHOE SYSTEM



DRAWN BY:
JJJ

DATE:
12/13/2018

SIZE:
A

SCALE:
1/10

REV:

SHEET NAME: COMPONENTS

2


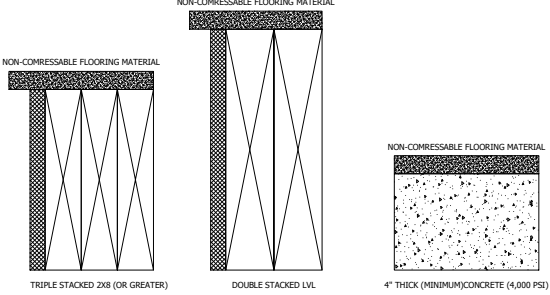

1





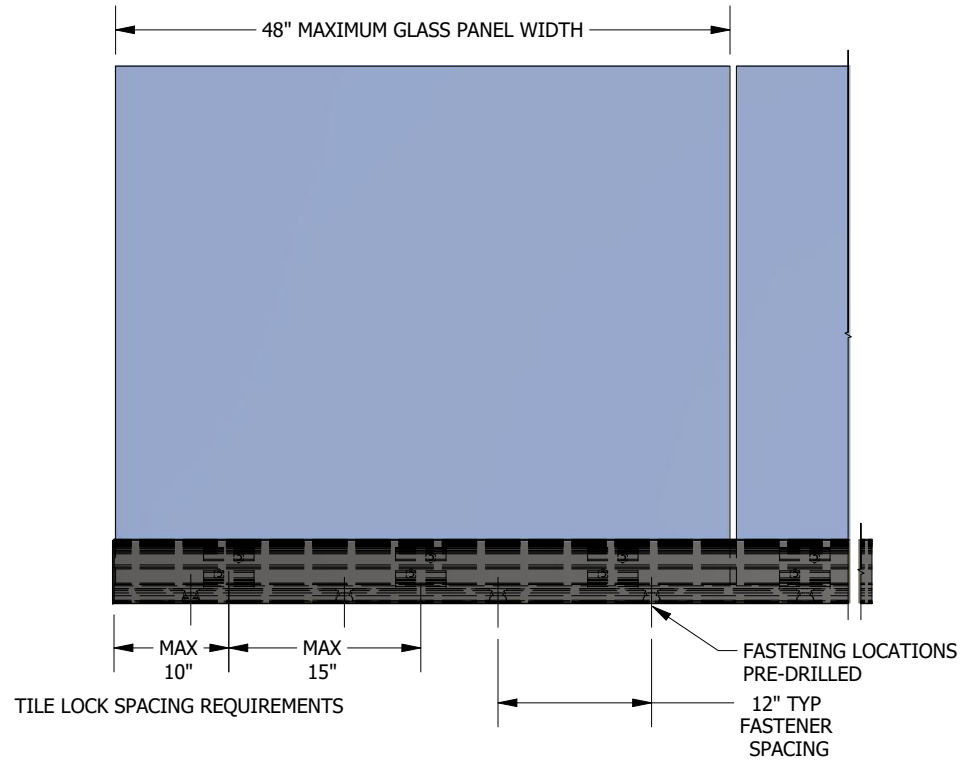
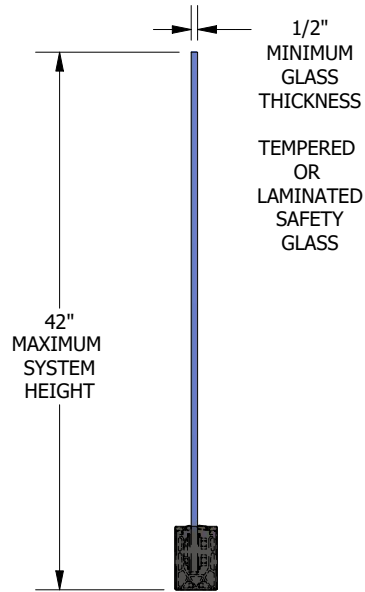
GENERAL NOTES:

1. GLASS THICKNESS IS 1/2" OR 12MM, AND MUST BE TEMPERED OR LAMINATED SAFETY GLASS.
2. SPECIFICATIONS ARE FOR COMPONENTS ONLY. FASTENING THE BASE CHANNEL TO THE SUPPORT STRUCTURE IS A SITE CONDITION AND THE INSTALLERS MUST ENSURE THAT THE FASTENERS ARE ADEQUATE TO RESIST THE DESIGN LOADS.
3. THE MATERIAL TO WHICH THE GLASS SUPPORTS ARE BEING FASTENED MUST ADEQUATELY RESIST THE DESIGN LOADS.
4. TILT LOCK CLIPS INSTALLED NO GREATER THAN 10" FROM END OF CHANNEL.
5. TILT LOCK CLIPS INSTALLED NO GREATER THAN 15" APART.

 <p>3/8 X 5" SPAX POWER LAG HEX WASHER DRIVE</p>	
<p>WOOD CONCRETE</p>  <p>CONCRETE WEDGE ANCHOR 3/8 x 3 1/2"</p>	<p>RECOMMENDED FASTENER</p> <p>MINIMUM MOUNTING CONDITONS REQUIRED SURFACE MOUNT SYSTEM TYPE INSTALLATIONS</p>

B

B



A

A



SYSTEM / PRODUCT:
GLASS - BASE RAIL SHOE SYSTEM



DRAWN BY:
JJJ

DATE:
12/13/2018

SIZE:
A

SCALE:
1/15

REV:

SHEET NAME: SYSTEM SPECIFICATIONS

