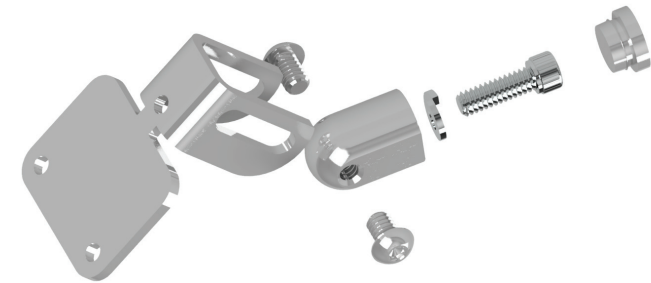
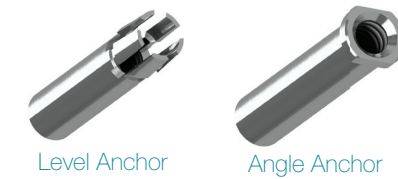




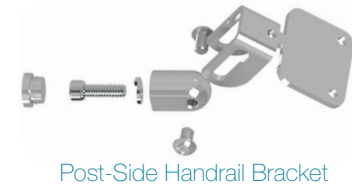
Rod Post Hardware Identification Chart

A Post		Threaded Crimps	Tension Receivers		
36"		Qty 10	Qty 10	-	
39"		Qty 11	Qty 11	-	
42"		Qty 12	Qty 12	-	
A-5 Post		No Hardware Needed			
All Post Heights		-	-	-	
B Down Post		Threaded Crimps	Tension Receivers	Angle Washers	
36"		Qty 10	Qty 10	Qty 10	
39"		Qty 11	Qty 11	Qty 11	
42"		Qty 12	Qty 12	Qty 12	
B Up Post		Threaded Crimps	Tension Receivers	Angle Washers	
36"		Qty 10	Qty 10	Qty 10	
39"		Qty 11	Qty 11	Qty 11	
42"		Qty 12	Qty 12	Qty 12	
A-5 Post		No Hardware Needed			
All Post Heights		-	-	-	
C Post		Threaded Crimps	Tension Receivers	Level Rod Anchors	
36"		Qty 20	Qty 10	Qty 10	
39"		Qty 22	Qty 11	Qty 11	
42"		Qty 24	Qty 12	Qty 12	
D Post		Threaded Crimps	Tension Receivers	Angle Washers	Post-Side Handrail Bracket
36"		Qty 20	Qty 20	Qty 10	Qty 1
39"		Qty 22	Qty 22	Qty 11	Qty 1
42"		Qty 24	Qty 24	Qty 12	Qty 1
G Post		Threaded Crimps	Level Rod Anchors	Angle Rod Anchors	Post-Side Handrail Bracket
36"		Qty 20	Qty 10	Qty 10	Qty 1
39"		Qty 22	Qty 11	Qty 11	Qty 1
42"		Qty 24	Qty 12	Qty 12	Qty 1



Images shown here are not to scale | Not all orders will have all hardware shown

Images shown here are not to scale | Not all orders will have all hardware shown



Images shown here are not to scale | Not all orders will have all hardware shown

H Post		Threaded Crimps	Level Rod Anchors	Angle Rod Anchors	Post-Side Handrail Bracket
39"		Qty 21	Qty 11	Qty 10	Qty 1
42"		Qty 22	Qty 12	Qty 10	Qty 1
I Post		Threaded Crimps	Tension Receivers	Angle Washers	Post-Side Handrail Bracket
39"		Qty 21	Qty 21	Qty 10	Qty 1
42"		Qty 22	Qty 22	Qty 10	Qty 1
J Down Post		Threaded Crimps	Angle Rod Anchors		
36"		Qty 10	Qty 10	-	-
39"		Qty 11	Qty 11	-	-
42"		Qty 12	Qty 12	-	-
J Up Post		Threaded Crimps	Angle Rod Anchors		
36"		Qty 10	Qty 10	-	-
39"		Qty 11	Qty 11	-	-
42"		Qty 12	Qty 12	-	-
R Post		Threaded Crimps	Level Rod Anchors		
36"		Qty 10	Qty 10	-	-
39"		Qty 11	Qty 11	-	-
42"		Qty 12	Qty 12	-	-
S Post		Threaded Crimps			
All Post Heights		-	-	-	-